

**Adapterauswahl COM1 (60bar)**

Hersteller	Verdichtermodell	Adaptertyp
<b>Bitzer</b>	4VC, 4TC, 4TE, 4PC, 4NC, 4J, 4H, 4G, 6J, 6H, 6G, 6F, 8GC, 8FC, 4VHC-10K, 4THC-12K, 4PHC-15K, 4NHC-20K, 4VSL-15K...4NSL-30K Ecoline: 4VES-7Y...4NES-20(Y), 4VE-7Y...4NE-20(Y), 4JE-13Y...4FE-35(Y)	COM-AD-000
	2KC, 2JC, 2HC, 2GC, 2FC, 2EC, 2DC, 2CC, 4FC, 4EC, 4DC, 4CC2KHC, 2JHC, 2HHC, 2GHC, 2FHC, 2EHC, 2DHC, 2CHC, 4FHC, 4EHC, 4DHC, 4CHC, 2MSL-07K...4CSL-12K Ecoline: 2KES-05(Y)...2FES-3(Y), 2EES-2(Y)...2CES-4(Y), 4FES-3(Y)...4CES-9(Y)	COM-AD-118-18 (P/N 12005)
<b>Bock</b>	HA, HAX, HG, O-Baureihe, HGX4/310-4, 385-4, 464-4, 555-4 (CO2), HGX88	COM-AD-000
	HA12/22/34, HG12/22/34 HGX12P/40-4, 50-4, 60-4, 75-4 (CO2) HGX22P110-4, HGX22P125-4, HGX22P/160-4, HGX22P/190-4 (CO2), HGX34P/215-4, HGX34P/255-4 (CO2)	COM-AD-118-18 (P/N 12005)
	HA/HG 22/34 (alternativ, 20mm längerer Adapter als P/N 12005)	COM-AD-118-18L
<b>Copeland</b>	D2, D3, D4, D6, D9, 4CC, 6CC, ZBH, 4M, 6M	COM-AD-000
	ZB 15..ZB48, ZB50/58/66/76/95/114, ZF06... ZF25, ZS21...ZS45, ZO21, ZO34...ZO104 ZO 235/295/385, ZB220	COM-AD-114
	<b>ab Mai 2012:</b> ZB56 ... ZB11, ZS56... ZS11, ZF24... ZF48	COM-AD-134
<b>Danfoss</b>	LFZ, MFZ, MLZ, MLM, MT, SM, SZ, LT	COM-AD-118-18 (P/N 12012)
<b>Dorin</b>	alle KP, K Modelle (außer die unter COM-AD-118-18 aufgeführten) SCC 500B, 750B, 1500B, 1900B, 2000B, 2500B, H41, H5, H6, H7, SCC_1, SCC_32, SCC_4, CDSW_35, CDS_41	COM-AD-000
	H11, H2, H32, H35, K100CC/CS, K150CC/CS, K180CC/CS, K200CC, K230CS, K235CC, K240SB, K40CC, K50CS, K75CC/CS- SCC 250B, 300B, 350B, 380B, CDS_11	COM-AD-118-18 (P/N 12011)
<b>Frascold</b>	Baureihen A, B, D, F, S, V, Z Series A-SK, D-SK, F-SK, Q-SK, S-SK	COM-AD-000
<b>Panasonic</b>	3CB067-110 (M24x1)	COM-AD-241 (P/N 12000)

**Adapterauswahl COM2 (120bar)**

Hersteller	Verdichtermodell	Adaptertyp
<b>Bitzer</b>	2MTE-4K..6CTE-50K, 4PTEU-6LK...6CTEU-50LK, 4PTE-7.F3K, 4MTE-10.F4K, 4KTE-10.F4K	COM-AD-118-18
<b>Bock</b>	HAX2 CO2T, HGX2 CO2T	auf Anfrage (G1")
	HGX34 CO2T, HGX46 CO2T	COM-AD-118-18
<b>Copeland</b>	4MSL, 4MTL	COM-AD-118-18
<b>Dorin</b>	CD200, CD300, CD400, CD2S-200, CD2S-400	COM-AD-DO6
<b>Frascold</b>	S8-8TK...S30-26TK	COM-AD-118-18

**Adapterauswahl COM1 für R 290, R1270 Kompressoren (60bar)**

Hersteller	Verdichtermodell	Adaptertyp
<b>Bitzer</b>	Ecoline: 2KESP-05(Y)...2FESP-3(Y), 2EESP-2(Y)...2CESP-4(Y), 4FESP-3(Y)...4CESP-9(Y)	COM-AD-118-18
	Ecoline: 4VESP-7Y...4NESP-20(Y), 4VEP-7Y...4NEP-20(Y), 4JEP-13Y...4FEP-35(Y)	COM-AD-000
<b>Frascold</b>	Serie A, B, D, Q, S, V, Z, W	COM-AD-000

AD-114/134



AD-000



AD-118-18



AD-034-14



AD-D06



**Adapter selection COM1 (60bar)**

Brand	Compressor modell	Adapter type
<b>Bitzer</b>	4VC, 4TC, 4TE, 4PC, 4NC, 4J, 4H, 4G, 6J, 6H, 6G, 6F, 8GC, 8FC, 4VHC-10K, 4THC-12K, 4PHC-15K, 4NHC-20K, 4VSL-15K...4NSL-30K Ecoline: 4VES-7Y...4NES-20(Y), 4VE-7Y...4NE-20(Y), 4JE-13Y...4FE-35(Y)	COM-AD-000
	2KC, 2JC, 2HC, 2GC, 2FC, 2EC, 2DC, 2CC, 4FC, 4EC, 4DC, 4CC2KHC, 2JHC, 2HHC, 2GHC, 2FHC, 2EHC, 2DHC, 2CHC, 4FHC, 4EHC, 4DHC, 4CHC, 2MSL-07K...4CSL-12K Ecoline: 2KES-05(Y)...2FES-3(Y), 2EES-2(Y)...2CES-4(Y), 4FES-3(Y)...4CES-9(Y)	COM-AD-118-18 (P/N 12005)
	HA, HAX, HG, O-Serie, HGX4/310-4, 385-4, 464-4, 555-4 (CO2), HGX88	COM-AD-000
<b>Bock</b>	HA12/22/34, HG12/22/34 HGX12P/40-4, 50-4, 60-4, 75-4 (CO2)	COM-AD-118-18 (P/N 12005)
	HGX22P110-4, HGX22P125-4, HGX22P/160-4, HGX22P/190-4 (CO2), HGX34P/215-4, HGX34P/255-4 (CO2)	
	HA/HG 22/34 (alternative, 20mm longer Adapter compared to P/N 12005)	COM-AD-118-18L
<b>Copeland</b>	D2, D3, D4, D6, D9, 4CC, 6CC, ZBH, 4M, 6M	COM-AD-000
	ZB 15..ZB48, ZB50/58/66/76/95/114, ZF06... ZF25, ZS21...ZS45, ZO21, ZO34...ZO104	COM-AD-114
	ZO 235/295/385, ZB220 <b>starting May 2012:</b> ZB56 ... ZB11, ZS56... ZS11, ZF24... ZF48	COM-AD-134
<b>Danfoss</b>	LFZ, MFZ, MLZ, MLM, MT, SM, SZ, LT	COM-AD-118-18 (P/N 12012)
<b>Dorin</b>	all KP, K Model (except those listed at COM-AD-118-18) SCC 500B, 750B, 1500B, 1900B, 2000B, 2500B, H41, H5, H6, H7, SCC_1, SCC_32, SCC_4, CDSW_35, CDS_41	COM-AD-000
	H11, H2, H32, H35, K100CC/CS, K150CC/CS, K180CC/CS, K200CC, K230CS, K235CC, K240SB, K40CC, K50CS, K75CC/CS- SCC 250B, 300B, 350B, 380B, CDS_11	COM-AD-118-18 (P/N 12011)
<b>Frascold</b>	Serie A, B, D, F, S, V, Z Series A-SK, D-SK, F-SK, Q-SK, S-SK	COM-AD-000
<b>Panasonic</b>	3CB067-110 (M24x1)	COM-AD-241 (P/N 12000)

**Adapter selection COM2 (120bar)**

Brand	Compressor model	Adapter type
<b>Bitzer</b>	2MTE-4K..6CTE-50K, 4PTEU-6LK...6CTEU-50LK, 4PTE-7.F3K, 4MTE-10.F4K, 4KTE-10.F4K	COM-AD-118-18
<b>Bock</b>	HAX2 CO2T, HGX2 CO2T	at request (G1")
	HGX34 CO2T, HGX46 CO2T	COM-AD-118-18
<b>Copeland</b>	4MSL, 4MTL	COM-AD-118-18
<b>Dorin</b>	CD200, CD300, CD400, CD2S-200, CD2S-400	COM-AD-DO6
<b>Frascold</b>	S8-8TK...S30-26TK	COM-AD-118-18

**Adapter selection COM1 for R290, R1270 compressor (60bar)**

Brand	Compressor model	Adapter type
<b>Bitzer</b>	Ecoline: 2KESP-05(Y)...2FESP-3(Y), 2EESP-2(Y)...2CESP-4(Y), 4FESP-3(Y)...4CESP-9(Y)	COM-AD-118-18
	Ecoline: 4VESP-7Y...4NESP-20(Y), 4VEP-7Y...4NEP-20(Y), 4JEP-13Y...4FEP-35(Y)	COM-AD-000
<b>Frascold</b>	Serie A, B, D, Q, S, V, Z, W	COM-AD-000

AD-114/134



AD-000



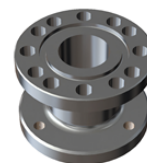
AD-118-18



AD-034-14



AD-D06



**Adapter selection COM1 (60bar)**

Brand	Compressor model	Adapter type
<b>Bitzer</b>	4VC, 4TC, 4TE, 4PC, 4NC, 4J, 4H, 4G, 6J, 6H, 6G, 6F, 8GC, 8FC, 4VHC-10K, 4THC-12K, 4PHC-15K, 4NHC-20K, 4VSL-15K...4NSL-30K Ecoline: 4VES-7Y...4NES-20(Y), 4VE-7Y...4NE-20(Y), 4JE-13Y...4FE-35(Y)	COM-AD-000
	2KC, 2JC, 2HC, 2GC, 2FC, 2EC, 2DC, 2CC, 4FC, 4EC, 4DC, 4CC2KHC, 2JHC, 2HHC, 2GHC, 2FHC, 2EHC, 2DHC, 2CHC, 4FHC, 4EHC, 4DHC, 4CHC, 2MSL-07K...4CSL-12K Ecoline: 2KES-05(Y)...2FES-3(Y), 2EES-2(Y)...2CES-4(Y), 4FES-3(Y)...4CES-9(Y)	COM-AD-118-18 (P/N 12005)
	HA, HAX, HG, O-Serie, HGX4/310-4, 385-4, 464-4, 555-4 (CO2)	COM-AD-000
<b>Bock</b>	HA12/22/34, HG12/22/34 HGX12P/40-4, 50-4, 60-4, 75-4 (CO2)	COM-AD-118-18 (P/N 12005)
	HGX22P110-4, HGX22P125-4, HGX22P/160-4, HGX22P/190-4 (CO2), HGX34P/215-4, HGX34P/255-4 (CO2)	
	HA/HG 22/34 (alternative, 20mm longer Adapter compared to P/N 12005)	COM-AD-118-18L
<b>Copeland</b>	D2, D3, D4, D6, D9, 4CC, 6CC, ZBH, 4M, 6M	COM-AD-000
	ZB 15..ZB48, ZB50/58/66/76/95/114, ZF06... ZF25, ZS21...ZS45, ZO21, ZO34...ZO104	COM-AD-114
	ZO 235/295/385, ZB220 <b>starting May 2012:</b> ZB56 ... ZB11, ZS56... ZS11, ZF24... ZF48	COM-AD-134
<b>Danfoss</b>	LFZ, MFZ, MLZ, MLM, MT, SM, SZ, LT	COM-AD-118-18 (P/N 12012)
<b>Dorin</b>	all KP, K Model (except those listed at COM-AD-118-18 ) SCC 500B, 750B, 1500B, 1900B, 2000B, 2500B, H41, H5, H6, H7, SCC_1, SCC_32, SCC_4, CDSW_35, CDS_41	COM-AD-000
	H11, H2, H32, H35, K100CC/CS, K150CC/CS, K180CC/CS, K200CC, K230CS, K235CC, K240SB, K40CC, K50CS, K75CC/CS- SCC 250B, 300B, 350B, 380B, CDS_11	COM-AD-118-18 (P/N 12011)
<b>Frascold</b>	Serie A, B, D, F, S, V, Z Series A-SK, D-SK, F-SK, Q-SK, S-SK	COM-AD-000
<b>Panasonic</b>	3CB067-110 (M24x1)	COM-AD-241 (P/N 12000)

**Adapter selection COM2 (120bar)**

Brand	Compressor model	Adapter type
<b>Bitzer</b>	2MTE-4K...6CTE-50K	COM-AD-118-18
<b>Bock</b>	HAX2 CO2T, HGX2 CO2T	at request (G1")
	HGX34 CO2T, HGX46 CO2T	COM-AD-118-18
<b>Copeland</b>	4MSL, 4MTL	COM-AD-118-18
<b>Dorin</b>	CD200, CD300, CD400, CD2S-200, CD2S-400	COM-AD-DO6
<b>Frascold</b>	S8-8TK...S30-26TK	COM-AD-118-18

**Adapter selection COM1 for R290, R1270 Compressor (60bar)**

Brand	Compressor model	Adapter type
<b>Bitzer</b>	Ecoline: 2KESP-05(Y)...2FESP-3(Y), 2EESP-2(Y)...2CESP-4(Y), 4FESP-3(Y)...4CESP-9(Y)	COM-AD-118-18
	Ecoline: 4VESP-7Y...4NESP-20(Y), 4VEP-7Y...4NEP-20(Y), 4JEP-13Y...4FEP-35(Y)	COM-AD-000
<b>Frascold</b>	Serie A, B, D, Q, S, V, Z, W	COM-AD-000

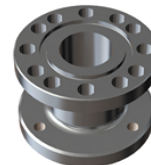
AD-114/134

AD-000

AD-118-18

AD-034-14

AD-DO6



**DEKA**  
controls

DEKA Controls GmbH  
Teinacher Strasse 68  
D-71634 Ludwigsburg

T +49 (0) 7141-70206-3  
F +49 (0) 7141 70206-40  
E [info@deka-controls.com](mailto:info@deka-controls.com)  
W [www.deka-controls.com](http://www.deka-controls.com)  
COM-AD-14-4-2020DE/EN

**Adapterauswahl COM1 (60bar)**

Hersteller	Verdichtermodell	Adaptertyp
<b>Bitzer</b>	4VC, 4TC, 4TE, 4PC, 4NC, 4J, 4H, 4G, 6J, 6H, 6G, 6F, 8GC, 8FC, 4VHC-10K, 4THC-12K, 4PHC-15K, 4NHC-20K, 4VSL-15K...4NSL-30K Ecoline: 4VES-7Y...4NES-20(Y), 4VE-7Y...4NE-20(Y), 4JE-13Y...4FE-35(Y)	COM-AD-000
	2KC, 2JC, 2HC, 2GC, 2FC, 2EC, 2DC, 2CC, 4FC, 4EC, 4DC, 4CC2KHC, 2JHC, 2HHC, 2GHC, 2FHC, 2EHC, 2DHC, 2CHC, 4FHC, 4EHC, 4DHC, 4CHC, 2MSL-07K...4CSL-12K Ecoline: 2KES-05(Y)...2FES-3(Y), 2EES-2(Y)...2CES-4(Y), 4FES-3(Y)...4CES-9(Y)	COM-AD-118-18 (P/N 12005)
	HA, HAX, HG, O-Baureihe, HGX4/310-4, 385-4, 464-4, 555-4 (CO2)	COM-AD-000
<b>Bock</b>	HA12/22/34, HG12/22/34 HGX12P/40-4, 50-4, 60-4, 75-4 (CO2)	COM-AD-118-18 (P/N 12005)
	HGX22P110-4, HGX22P125-4, HGX22P/160-4, HGX22P/190-4 (CO2), HGX34P/215-4, HGX34P/255-4 (CO2)	
	HA/HG 22/34 (alternativ, 20mm längerer Adapter als P/N 12005)	COM-AD-118-18L
<b>Copeland</b>	D2, D3, D4, D6, D9, 4CC, 6CC, ZBH, 4M, 6M	COM-AD-000
	ZB 15..ZB48, ZB50/58/66/76/95/114, ZF06... ZF25, ZS21...ZS45, ZO21, ZO34...ZO104	COM-AD-114
	ZO 235/295/385, ZB220 <b>ab Mai 2012:</b> ZB56 ... ZB11, ZS56... ZS11, ZF24... ZF48	COM-AD-134
<b>Danfoss</b>	LFZ, MFZ, MLZ, MLM, MT, SM, SZ, LT	COM-AD-118-18 (P/N 12012)
<b>Dorin</b>	alle KP, K Modelle (außer die unter COM-AD-118-18 aufgeführten) SCC 500B, 750B, 1500B, 1900B, 2000B, 2500B, H41, H5, H6, H7, SCC_1, SCC_32, SCC_4, CDSW_35, CDS_41	COM-AD-000
	H11, H2, H32, H35, K100CC/CS, K150CC/CS, K180CC/CS, K200CC, K230CS, K235CC, K240SB, K40CC, K50CS, K75CC/CS- SCC 250B, 300B, 350B, 380B, CDS_11	COM-AD-118-18 (P/N 12011)
<b>Frascold</b>	Baureihen A, B, D, F, S, V, Z Series A-SK, D-SK, F-SK, Q-SK, S-SK	COM-AD-000
<b>Panasonic</b>	3CB067-110 (M24x1)	COM-AD-241 (P/N 12000)

**Adapterauswahl COM2 (120bar)**

Hersteller	Verdichtermodell	Adaptertyp
<b>Bitzer</b>	2MTE-4K...6CTE-50K	COM-AD-118-18
<b>Bock</b>	HAX2 CO2T, HGX2 CO2T	auf Anfrage (G1")
	HGX34 CO2T, HGX46 CO2T	COM-AD-118-18
<b>Copeland</b>	4MSL, 4MTL	COM-AD-118-18
<b>Dorin</b>	CD200, CD300, CD400, CD2S-200, CD2S-400	COM-AD-DO6
<b>Frascold</b>	S8-8TK...S30-26TK	COM-AD-118-18

**Adapterauswahl COM1 für R 290, R1270 Kompressoren (60bar)**

Hersteller	Verdichtermodell	Adaptertyp
<b>Bitzer</b>	Ecoline: 2KESP-05(Y)...2FESP-3(Y), 2EESP-2(Y)...2CESP-4(Y), 4FESP-3(Y)...4CESP-9(Y)	COM-AD-118-18
	Ecoline: 4VESP-7Y...4NESP-20(Y), 4VEP-7Y...4NEP-20(Y), 4JEP-13Y...4FEP-35(Y)	COM-AD-000
<b>Frascold</b>	Serie A, B, D, Q, S, V, Z, W	COM-AD-000

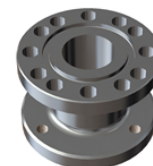
AD-114/134

AD-000

AD-118-18

AD-034-14

AD-D06



**DEKA**  
controls

DEKA Controls GmbH  
Teinacher Strasse 68  
D-71634 Ludwigsburg

T +49 (0) 7141-70206-3  
F +49 (0) 7141 70206-40  
E [info@deka-controls.com](mailto:info@deka-controls.com)  
W [www.deka-controls.com](http://www.deka-controls.com)  
COM-AD-14-4-2020DE/EN